

# TONONE

technical specifications

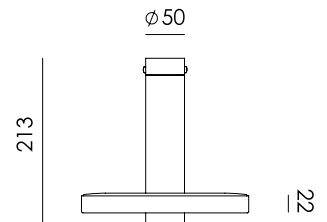
## BEADS direct inside

Design by Anton de Groof, 2018



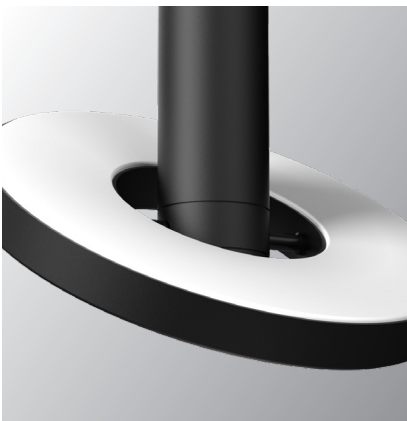
The Tonone Beads collection is designed to fit in every environment. The modest look of the armature, shines when it comes to functionality. With its 360-degree dimmable and pivotable LED ring, the Beads is a solution for any situation. The lightweight Beads lamp is made of black powder-coated aluminium and is equipped with a high-quality integrated LED light source. The Beads Direct is dimmable through an external LED dimmer (not included). Beads is available as a pendant, ceiling-, wall-, floor- or table lamp.

Type	Ceiling / wall lamp
Environment	Indoor
Material	Aluminum
Cord length	Does not apply
Weight	0,8 kg
Voltage	220-240 V
Watt	16 Watt
IP	20
Lightsource	Integrated LED source
Lumen	900
Kelvin	Dim to warm ( 2100K to 2800K )
CRI	90
Dimmable	Phase cut dimmable
Packaging	
Weight	2,1 kg
Length	27 cm
Width	27 cm
Height	34 cm



# TONONE

technical specifications



Article number



smokey black

2030